

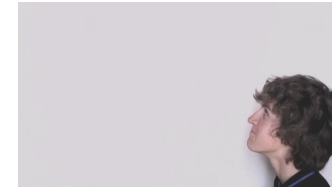
**Point Of View**

Camera seen from a person's point of view, used to show a person's perspective



**Close Up**

Camera closed in to show face and shoulders, used to show facial features and emotion



**High Angle**

Camera points down from above eye line, used to showcase vulnerability



**Over The Shoulder**

Camera shown from over a person's shoulder, used to showcase another dimension to the scene



**Big Close up**

A more exaggerated close up shot, used to showcase more facial features



**Low Angle**

Camera points up to a person or monument, used to showcase power and importance

**Use a range of these shots to create narrative and make a film to you liking, filmmaking is about creating stories that people can understand**



**BOLDFACE**

PRODUCTIONS

[www.boldfaceproductions.co.uk](http://www.boldfaceproductions.co.uk)  
[www.twitter.com/boldfacepro](https://www.twitter.com/boldfacepro)  
[www.youtube.com/boldfacepro](https://www.youtube.com/boldfacepro)  
Facebook group: boldface productions



**Medium Close up**

Head and shoulders seen in shot, like a close up but more is seen of the body



**2 shot, 3 Shot**

Shot of more than one character, emphasis of the relationship between people is seen



**Long Shot**

Full shot of person is seen but also of surroundings, can be used to showcase loneliness or isolation



**Medium Long Shot**

Action and body language is shown. Closer than a long shot but surroundings still seen



**Mid Shot**

Camera shot from the waist upwards, tells the audience more on the person's character and emphasis put on clothes



**Wide Shot**

Used as an establishing shot and showcases location and characters